



DAC Telephony

Beacons

Xenon, EExd: 5 & 21 Joule
Accessories



5 Joule Xenon Beacons



21 Joule Xenon Beacons

FEATURES

- Zone 1 and Zone 2 use
- Stainless steel or marine grade alloy
- Optional EExe terminal chamber
- Various lens colours and optional lens guard
- Telephone or relay initiated option
- ATEX approved ExII2G
- High safety in potentially explosive atmospheres
- Extended product lifetime
- Increased safety in harsh environmental conditions
- Satisfies customer specification
- Increased flexibility for different applications

These certified beacons have been designed for use in harsh environmental conditions.

The **marine grade** alloy enclosures are suitable for use offshore or onshore, where light weight combined with corrosion resistance and strength is required.




The beacons are used in many applications with GAI-Tronics products and systems.

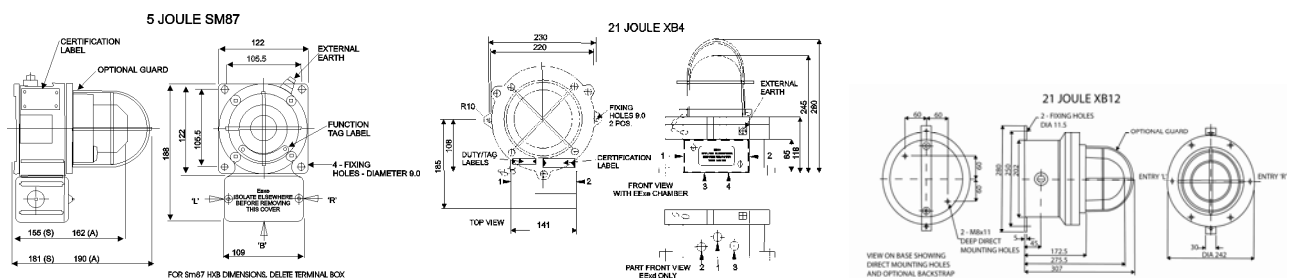
Units can be painted to customer specification and fitted with identification labels if required.

DAC Telephony

Beacons

Xenon, EExd: 5 & 21 Joule Accessories

TUBE ENERGY	5 JOULES (ATEX)		21 JOULES (ATEX)		21 JOULES (ATEX)	
		NOTE: THE TERMINAL BOX IS NOT FITTED TO THIS MODEL THIS BEACON IS NOT FITTED WITH A RING DETECTOR OR LENS GUARD		NOTE: THIS BEACON IS NOT FITTED WITH A RING DETECTOR OR LENS GUARD THE TERMINAL BOX IS NOT FITTED TO THIS MODEL		NOTE: THIS BEACON IS FITTED WITH A RING DETECTOR
ORDER NUMBER	100-02-0100-396 100-02-0100-393 100-02-0100-392	BLUE AMBER RED	100-02-0200-399 100-02-0200-395 100-02-0200-398	CLEAR GREEN YELLOW	100-02-0201-395 100-02-0201-392 100-02-0201-396 100-02-0201-398 100-02-0201-393	GREEN RED BLUE YELLOW AMBER
VOLTAGE	240v					
OPERATING TEMPERATURE	-55°C to +70°C T6		EExd -55°C to +55°C		EExd -55°C to +70°C	
INGRESS PROTECTION	IP66 & IP67					
TERMINALS	4 off suitable for up to 2.5mm ² cable		8 off suitable for up to 10mm ² cable		6 off suitable for up to 6mm ² cable	
TERMINATION	Uses a single Exd chamber					
OPTIONAL: TELEPHONE INITIATION OR RELAY INTERFACE	None		None		Initiation by telephone ringing tone (Shunt Capacitor fitted to Beacon)	
ENTRIES	1x20mm bottom		10 x 20mm ISO		2 x 20mm ISO	
BASEEFA	ATEX EExd IIC T6. Cert No. 03ATEX0222X		ATEX EExd IIC T5 Cert No. 02ATEX0224X		ATEX EExd IIB T4 & T5 Cert No. BAS 99ATEX2196	
CENELEC	EN50014 and EN50018 and EN50019		EN50014 and EN50018 and EN50019		EN50014 and EN50018	
MATERIAL	Body : LM25TF Marine Grade Alloy Tube: Xenon Lens: Toughened glass		Body: LM25TF Marine Grade Alloy Lens: Toughened glass Terminal Chamber: Glass Reinforced Polyester (GRP)		Body: GRP Lens: Toughened Glass Strap & Screens: Stainless Steel 316	
FINISH	Red epoxy paint finish as standard or to customers' specification		Red epoxy paint finish as standard or to customers' specification		Natural Black finish	
WEIGHT (approx)	2 kg		EExd 6.6kg		7kg	
PEAK CURRENT CONSUMPTION	135mA		185mA		185mA	
EFFECTIVE (PEAK) INTENSITY	39Cd (30187Cd)		355Cd (123691Cd) (Clear)		355Cd (123691Cd) (Clear)	
POWER CONSUMPTION / FLASH RATE	27 Watts		60/Min		44.4 Watts	



Note

Above information is supplied by manufacturer, GAI-Tronics do not have any control over the above certification information.



GAI-Tronics, UK - Tel: +44 (0)1283 500500 - Fax: +44 (0)1283 500400 - www.gai-tronics.co.uk
 GAI-Tronics Corporation, USA - Tel: +(610) 777 1374 - Toll Free: 800 492 1212 - Fax: +(610) 775 6540 - www.gai-tronics.com
 GAI-Tronics S.r.l, Italy - Tel: +39 02 48601 460 - Fax: +39 02 4585 625
 GAI-Tronics Corporation, Malaysia - Tel: +60 3 8945 4035 - Fax: +60 3 8945 4675
 An ISO9001 Registered Company
 The policy of GAI-Tronics is one of continuous improvement, therefore the company reserves the right to change specifications without notice.